



## GDPR Consent Requests

**Article ID: GV1-18-06-08-al**

**Release Date: 06/07/2018**

**Revision Date: 8/30/2019**

### Applied to

GV-VMS V17.1.0.100 or later  
GV-DVR / NVR V8.7.6 or later  
GV-Control Center V3.5.1 or later  
GV-Recording Server V1.4.1 or later  
GV-Center V2 V17.2.0 or later  
GV-Vital Sign Monitor V17.2.0 or later

### Summary

With GDPR (General Data Protection Regulation) in effect to protect EU citizens from data breaches, GeoVision is seeking consent for the use of your personal information, **such as name, telephone number, e-mail address, and hotline number, even when creating a user account**, across multiple product platforms. Use the following instructions to install the latest version and patch file for your own security.

### Table of Content

<b>Instructions</b> .....	<b>2</b>
Installing the Latest Version and Patch File .....	2
<b>Accessing Data Protection Mechanisms</b> .....	<b>3</b>
Example 1: E-Mail Setup dialog box .....	3
Example 2: Privacy Mask Protection.....	4



## Instructions

### Installing the Latest Version and Patch File

Supported Software	Location
GV-VMS V17.1.0.100 or later	<a href="#">Download Page</a>
GV-Control Center V3.5.1 or later	<a href="#">Download Page</a>
GV-Recording Server V1.4.1 or later	<a href="#">Download Page</a>
GV-Center V2 V17.2.0 or later	<a href="#">Download Page</a>
GV-Vital Sign Monitor V17.2.0 or later	<a href="#">Download Page</a>
GV-NVR V8.7.6 or later	<a href="#">Download Page</a>
GV-DVR V8.7.6 or later	<a href="#">Download Page</a>

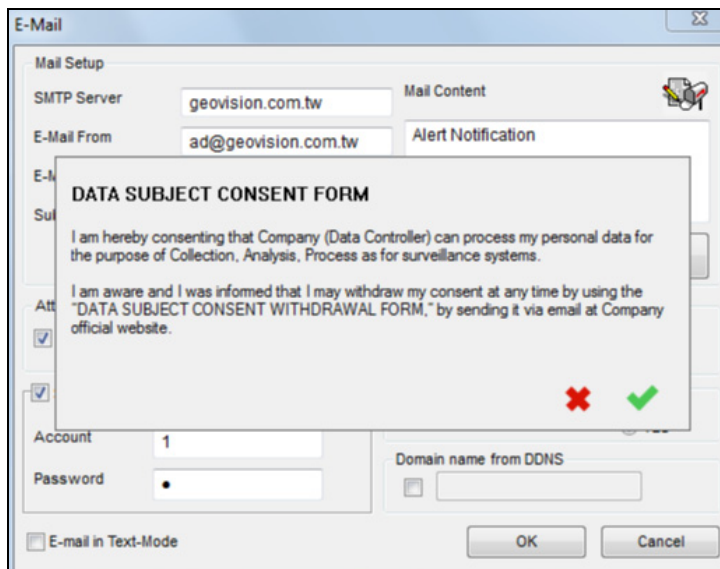


## Accessing Data Protection Mechanisms

Data protection mechanisms can be found at various user interfaces of the supported product platforms on which your personal data is involved.

### Example 1: E-Mail Setup dialog box

After clicking **OK** to enable e-mail notification, an implied consent form will pop up asking for a permission to process your personal data. Clicking  will store your consent in the GDPR folder (e.g. C:\GV-VMS\GDPR).



To obtain the record of which system collects which personal data, you can open the html document stored in the GDPR folder.

**General Data Protection Regulation (GDPR) Data Recordation List**

Subsidiary/Department: \_\_\_\_\_ Record Officer: \_\_\_\_\_ Date: \_\_\_\_ (Y) \_\_\_\_ (M) \_\_\_\_ (D)

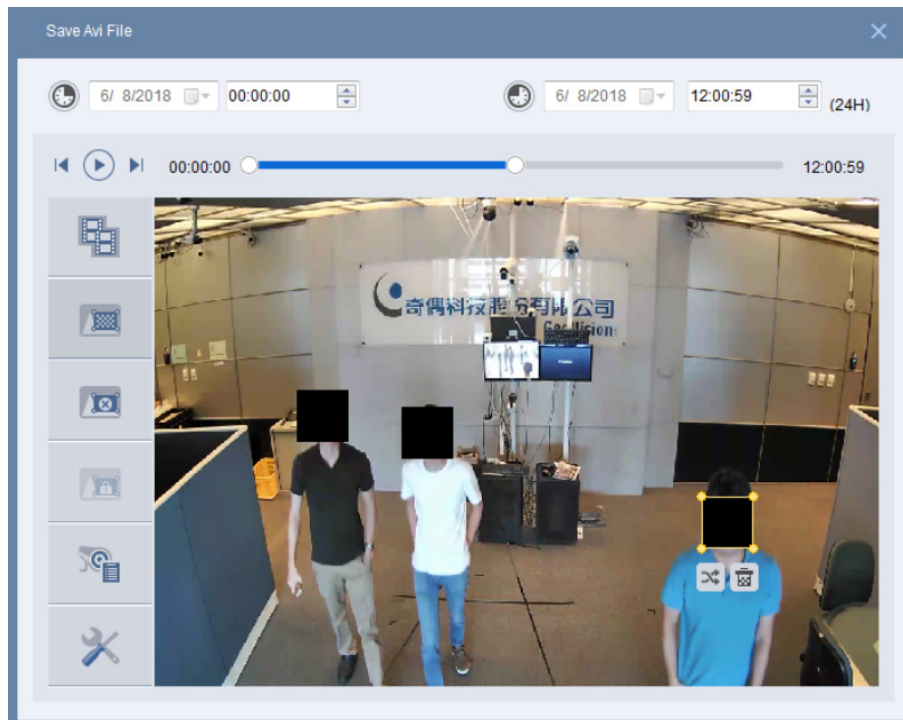
Systems Name	Data Category	Data Content	Purpose	Storage Location/Period	Transfer Location	Confidentiality	Note
GV-VMS	Application	E-Mail: ad@geovision.com.tw	Consent to use			High	





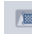
Data Protection Office (DPO) signature: \_\_\_\_\_ Date: \_\_\_\_ (Y) \_\_\_\_ (M) \_\_\_\_ (D)



## Example 2: Privacy Mask Protection

Upon exporting recordings, you can exclude faces for visibility in the video to protect personal identity.



1. On the main menu of GV-VMS, click **ViewLog**  and display the cameras on the date and layout you wish to be exported.
2. Click **Toolbar** , select **Tools**  and select **Save as Avi**.
3. Drag the timeline to define a starting and ending time of the video(s) to be exported.
4. Click  to play the video, which will start moving forward 1/10 second slower than usual.
5. When a person appears in the video, click  to conceal the face.
6. Follow the person in step 5 and drag the area(s) to block out the face until the end of the video.
7. To save all the areas, return to the starting time before exporting the video.